



# Streamo Karavel NG

Marine Floorings  
for ship interiors

**Gerflor**<sup>®</sup>





# Decorative Strip

- Design solution to create a traditional ship decking effect
- 5 available colours
- 2 dimensions: 4 or 6 mm (Black only) x 914 x 2.4mm



0339 American Oak

	914 x 4 mm
	914 x 4 mm / 914 x 6 mm
	914 x 4 mm
	914 x 4 mm
	914 x 4 mm



**Packaging** 4 mm: 65 strips / box  
6 mm: 35 strips / box



# Streamo by Gerflor

With over 60 years of experience, Gerflor offers a complete range of floorings specifically engineered to meet the most stringent requirements of Transportation markets. Gerflor develops reliable and long-term partnerships with manufacturers and worldwide operators.

**STREAMO products are especially designed for ship interiors and meet the international requirements and demands of the industry:**

Our Streamo floor coverings meet the highest technical performance standards:

- Exceptional abrasion resistance for high-traffic areas
- Easy maintenance, thanks in particular to the patented Evercare surface treatment
- Innovative design with a wide range of colours and patterns in wood, stone, textile, etc.
- A commitment to the environment: compliance with REACH standards and VOC emissions from our products that are up to 100 times lower than standards.
- Specific solutions such as dissipative floorings or rubber-studded tiles.

## Our mission statement

Anticipate and lead the way through:

- Innovative, decorative, sustainable and specialty-based solutions
- A steadfast devotion to the needs and success of our customers and partners

We will meet these challenges by our teams' passion and belief that there is always a better way.



© Kari Palsila

# Streamo sustainable solutions

## We care / We act

Our Commitments for a Sustainable future

We design and manufacture our flooring solutions, keeping in mind our responsibility towards our teams, our customers and our environment. We set ourselves the highest standards in terms of health and well-being.

Gerflor has always set the principles of the circular economy at the heart of its industrial processes. We are pursuing our objectives of profitable growth while proactively managing our environmental and social impacts.

Gerflor has now structured its CSR approach around a much more global ambition: have a positive impact on our direct sphere of influence – our employees, our products, our customers, - and more broadly on society and the environment.

**We care, we act** is more than a slogan, it is a vision that guides us every day vis-à-vis our teams, our customers, our communities and the planet.

Gerflor is committed to help the marine industry reduce its carbon footprint.



### Selected and responsible raw materials

**No** heavy metal, **No** solvent, **No** formaldehyde, **No** substance potentially subject to REACH\* restrictions.

### Inventory of Hazardous Materials

Streamo range complies with the guidelines for development of Inventory of Hazardous Materials Resolution MEPC 269 (68).



### Low VOC product - Indoor air Quality

TVOC < 10 µg/m<sup>3</sup> after 28 days



### 100% recyclable materials

Up to 25% recycled content



### ISO 14001 & ISO 50001 certified

\*REACH is the European regulation on registering, assessing and authorising chemical products within the European Union

We set the highest standards when it comes to environmental quality.



# Flooring solutions for all areas

**Passengers cabins / suites**  
Karavel NG



**Spa / treatment room**  
Karavel NG



**Public areas:  
bar / restaurant / cafeteria**  
Karavel NG



**Reception Desk**  
Karavel NG



**Crew area / restaurant**  
Homogeneous flooring



**Officers cabins**  
Karavel NG



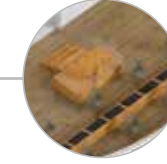
**Corridors / stairs cases**  
Homogeneous flooring



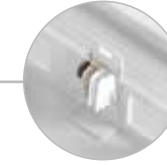
**Kids Area**  
homogeneous flooring: Sailer



**Gym area**  
Karavel NG - Sports flooring



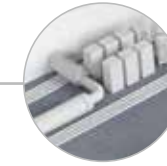
**Wheelhouse**  
Karavel NG



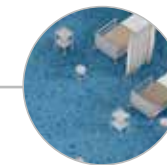
**Shop**  
Karavel NG



**Gaming area**  
Karavel NG



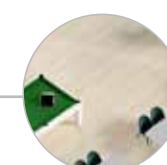
**Technical area**  
Mariner SD / Clipper RT



**Medical center / hospital**  
homogeneous flooring: Sailer - Seacrosser



**Crew Cabins**  
Homogeneous flooring



**Crew social area**  
Homogeneous flooring



# They trust us

## EUROPE

- ADA Shipyard
- Aksoy Shipyard
- Anek Lines
- Arctech Helsinki Shipyard
- Balearia
- Balenciaga
- Baltflot / Volgaflot
- BaltInterPRO
- Basto Fosen
- Besiktas Shipyard
- Blohm + Voss
- Bourbon
- Brittany Ferries
- Brodosplit
- Calmac Ferries
- Celestyal
- Celiktrans Shipyard
- Cemre Shipyard
- CMA Ships
- Coastguard
- Corsica Ferries
- Corsica Linea
- CRN
- Cunard
- Cyclades Fast Ferries
- Damen
- De Wave Group
- DFDS
- Dragados Offshore
- DCNS
- Ensco
- Feadship
- Ferry Operator in Spain
- Fincantieri
- Finnlines
- Fiskebas
- Flensburger Schiffbau
- FRISIA Reederei
- GESER
- Golden Ferries
- Gotland
- Grandi Navi Veloci
- Griffon Hoverwork Ltd
- Grimaldi Group
- Hapag-Lloyd Cruises
- Hellenic Fast Ferries
- Irish Ferries
- Island Ferries
- Khabarovsk Shipyard
- Louis Cruise
- Louis Dreyfus Armateur
- Macduff Shipyards
- Marine Interiors
- Maritime Montering
- MED Marine
- Meyer Turku
- Meyer Werft
- Minoan Lines
- MOD
- MSC Cruises
- Murueta
- Mystic Cruises
- Navigazione Libera Del Golfo
- Neptun Werft
- Nordic Yards

## OCEANIA

- OCEA
- OKA Shipyard
- Oldendorff
- Orange Marine
- Ozata Shipyard
- P&O Cruises
- Palumbo
- Phoenix Reisen
- Pirou
- Reederei Adler-Schiffe
- Reederei AG Ems
- Reederei Leonhardt & Blumberg
- Reederei Norden-Frisia
- Remontowa
- Rif Rostov
- Rosetti
- Saint Peter Line
- Salamis Shipyards
- Scheepswerf Gebroeders Kooiman
- Sea Jets
- Sea-River Rescue Service
- Sefine Shipyard
- Selah Shipyard
- Severrechliflot
- Shipyard Royal Van Lent
- SNSZ Shipyard
- Sovcomflot
- Stena Line
- Sturie
- STX- Tallink
- Technip
- Temruk Sea Port
- Tersan Shipyard
- Thames Clipper
- Total
- TUI Cruises
- Uljanik Shipyard
- Ulstein
- Uzmar Shipyard
- Viborg
- Viking Line
- Vostochnaya Verf Shipyard
- Westcon
- West Sea
- Yaroslav Shipyard
- Zamakona...

## AFRICA AND MIDDLE EAST

- ADNOC
- CNOI Mauritius
- Eversendai Offshore
- GMS (Gulf Marine Services)
- Grandweld Shipyard
- Lamprell
- Mubarak Marine LLC
- Yachtley...

## NORTH AND SOUTH AMERICA

- Adriatic Marine
- American Queen Steamboat Company
- ASENAV
- BAE Systems
- Baru Offshore
- BC Ferries
- C&C Marine & Repair
- Carnival Cruise Lines
- Celebration Cruise Line
- Celebrity Cruises
- Colonia Express
- Cotecmar
- Detroit Chile S.A
- Disney Cruise Line
- Eddison Chouest
- ETP Engenheria
- Grupo CBO
- Holland America Line
- Lindblad Expeditions
- Master Boat Builders
- Mercy Ships
- Midship Marine
- Nichols Brothers Boat Builders
- Noble Energy
- Norwegian Cruise Line
- Oceaneering International
- Oro Negro
- Petrobras
- Princess Cruises
- Royal Caribbean International
- Savannah Riverboat Cruises
- Seacor Marine
- Seaspans Ferries
- Senesco Marine
- Silversea
- Société des Traversiers du Québec
- Sunstone
- Ultramar
- USCG Ships
- US Navy Ships
- Vard Promar
- Victory Cruise Lines
- Vidanta
- Viking Cruises...

## ASIA AND OCEANIA

- APSI
- Beibu Gulf Tourism
- Century Cruises
- China Merchants Jinling Shipyard (Weihai)
- Chengxi Shipyard
- China Coast Guard
- China Fishery Bureau
- China Marine Surveillance
- China Merchants Jinling Dingheng Shipyard (Yangzhou)
- China Merchants Jinling Shipyard (Nanjing)
- China Merchants Heavy Industry (Haimen)
- China MSA
- Chongqing Zhongjiang Shipbuilding
- COSCO Heavy Shipping Industry (Yangzhou)
- CIMC Raffles

## ASIA AND OCEANIA

- COOEC
- Corsair Marine
- COSCO KHI
- COSL
- Crystal Cruises
- CSSC Huangpu Wenchong Shipbuilding
- Dae Sun Shipyard
- Daewoo Shipbuilding and Marine Engineering
- Dalian Shipbuilding Industry Company
- New Dayang Shipbuilding
- Dream Cruises
- Ehime KaiRikuun
- Ezra-Triyard
- FTS Derricks
- Fujian Southeast Shipbuilding
- Guangzhou Shipyard International
- Huanghai Shipbuilding
- Hudong Zhonghua Shipbuilding
- Hyundai Heavy Industries
- Hyundai Mipo Dockyard
- Hyundai Samho Heavy Industries
- IHI Corporation - Aichi Works
- Imabari Shipbuilding Group
- Incat
- Japan Marine United Corporation
- Jiangnan Shipyard
- Jiangsu New Yangzi Shipbuilding
- Jurong Shipyard
- Kawasaki Heavy Industries
- Kawasaki Kisen Kaisha
- Keppel Fels
- Keppel Shipyard
- Majestic Ferry
- Marubeni
- Mitsubishi Shimonoseki
- Nagasaki Sempaku Sobi
- Naikai Shipyard
- National Antiquities Authority
- New Dayang Shipbuilding
- New Times Shipbuilding
- Otto Marine
- PPL Shipyard
- PT Batamec
- PT Jaya Shipyard
- Qingdao Beihai Shipbuilding Heavy Industry
- Samsung Heavy Industries
- SEAS
- Sembcorp Marine
- ShanHaiGuan Shipping Industry
- Shouei Kisen
- Star Cruise
- SWS
- Tianjin Xingang Shipbuilding Heavy Industry
- Tokyo Gas
- Triyard
- Tsuneishi Group (Zhoushan) Shipbuilding
- Wisdom Marine Lines
- Wison Offshore & Marine
- Wuchang Shipbuilding Heavy Industry
- Xiamen Shipbuilding Industry...





# Karavel NG



0707 White Teak  102×914 mm




0448 Malua Bay  184×1219 mm



0846 Swiss Oak Pearl  184×1219 mm



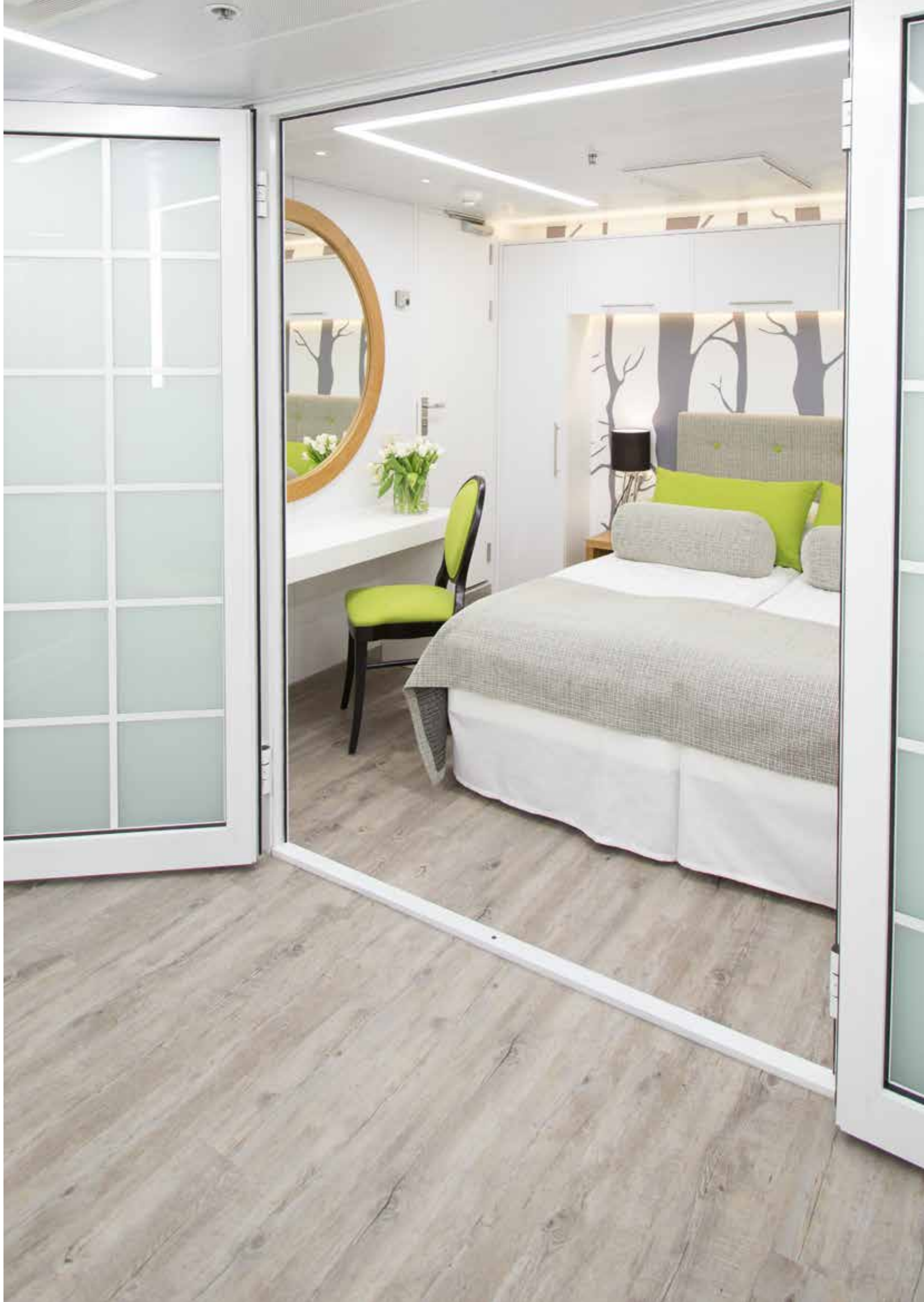
0357 Portobello  152×914 mm



0811 Chevron Buckwheat  184×1219 mm



0810 Chevron Moka  184×1219 mm





# Karavel NG



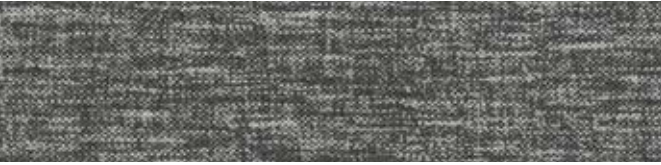
0848 Swiss Oak Beige 184x1219 mm



0796 Swiss Oak Golden 184x1219 mm



1083 Gentleman Taupe 610x610 mm



1058 Gentleman Grey 610x610 mm



1077 Tatami Savane 610x610 mm



0577 Albion 184x1219 mm



0817 Northwood Mokaccino 184x1219 mm



0547 Duchess 152x914 mm



0871 Bostonian Oak Brown 184x1219 mm



0855 Bostonian Oak Grey 184x1219 mm



0259 Natural Oak 152x914 mm



0265 Walnut 152x914 mm



0258 Muir Oak 152x914 mm



0339 American Oak 152x914 mm



0324 Silversands 152x914 mm



0705 Teak 102x914 mm



0262 Elm 152x914 mm



© Giorgos Sfakianakis



# Karavel NG



0360 Deep Forest 152x914 mm



0362 Mystic River 152x914 mm



0541 Flamingo 152x914 mm



0094 Rust Metal 457x914 mm



0095 Rust Corten 457x914 mm



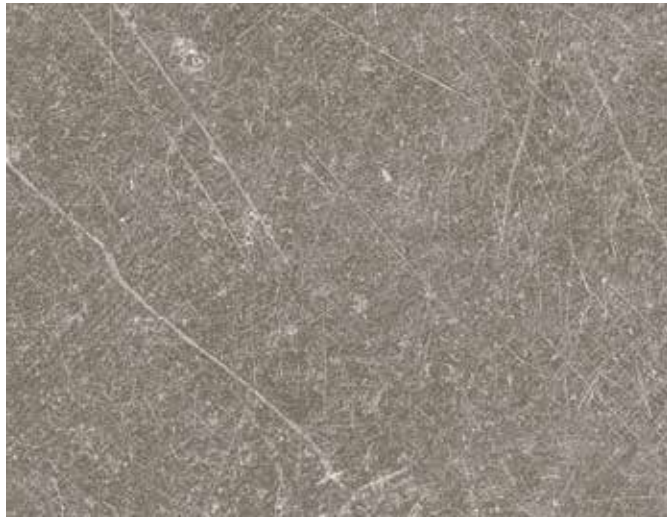
0518 Mugello 457x457 mm



0528 Flagstaff 457x457 mm



0751 Durango Taupe 610x610 mm



0618 Carmel 610x610 mm



0475 Bolero 457x457 mm



0512 Lewis Town 457x457 mm





# Finishes & Services

## Logos Inlays

- 4 standard drawings available in different colour variations
- Custom logos on demand



Style



Elegance



Royal



Classic



## Decorative Strip



0330 Silver

914 × 4 mm



0331 Black

914 × 4 mm / 914 × 6 mm



0333 Dark Concrete

914 × 4 mm



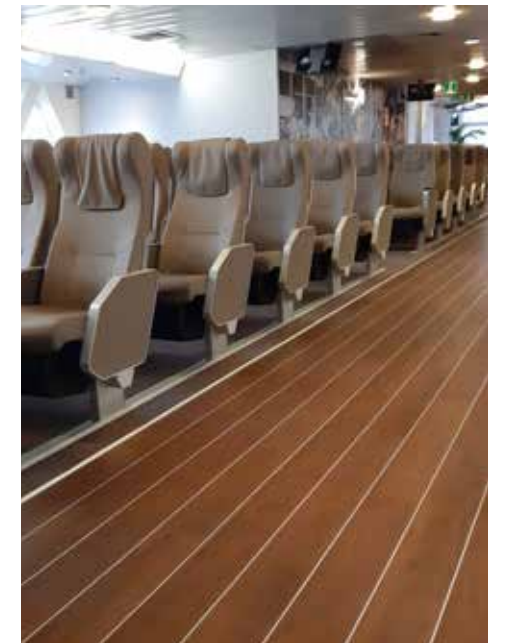
0334 Brown Concrete

914 × 4 mm



0335 White Concrete

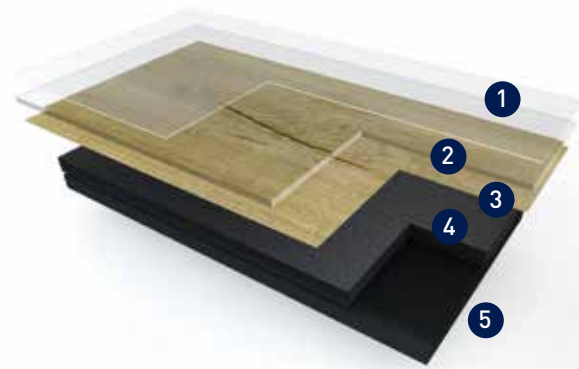
914 × 4 mm



**Packaging** 4 mm: 65 strips / box  
6 mm: 35 strips / box



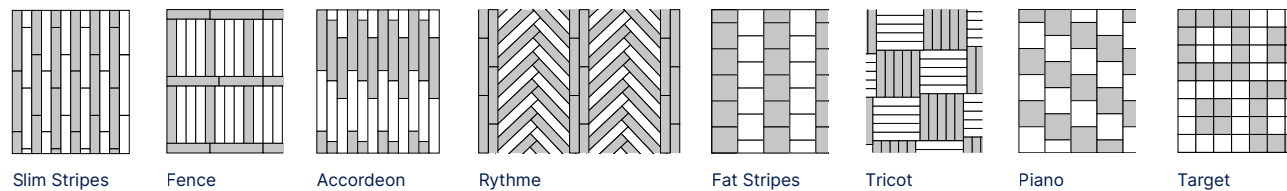
# Description



- 1 PUR surface treatment
- 2 0.55 mm transparent wear layer
- 3 Printed design
- 4 Medium layer
- 5 Back layer

- 34 realistic designs with a matt surface.
- Improved performances in terms of abrasion, scuffing and stain resistance.
- Easy maintenance.
- Rigid product construction for an easy installation.

## Explore the world of possibilities



© Kari Palsila



© Kari Palsila

# Technical data

Streamo Karavel NG			
Description			
Total thickness	EN ISO 24346	mm	2.50
Thickness of the wearlayer	EN ISO 24340	mm	0.55
Weight	EN ISO 23997	g/m <sup>2</sup>	4100
Plank size	EN ISO 24342	cm	45.7 × 91.4 / 61 × 61 / 18.4 × 121.9 15.2 × 91.4 / 45.7 × 45.7 / 10.2 × 91.4
Classification			
Norm/product specification	-	-	ISO 19322
Fire rating	IMO Resolution	-	MSC 307(88) Part 5
			MSC 307(88) Part 2
			Marine Equipment Directive
			US Coast Guard
Maritime Approvals	-	Transport Canada	
		SOLAS 74	
Static electrical propensity	EN 1815	kV	< 2
Performance			
Wet Slip resistance	DIN EN 16165 Annex B	class	R10*
Castor chair test	ISO 4918	-	OK
Dimensional stability (norm)	EN ISO 23999	%	≤ 0.25
Dimensional stability (average measured value)	EN ISO 23999	%	≤ 0.15
Residual indentation	EN ISO 24343-1	mm	≤ 0.10
Thermal conductivity	EN ISO 10456	W/(m.K)	0.25
Colour fastness	EN ISO 105 - B02	degree	≥ 6
Chemical resistance	EN ISO 26987	-	OK
Surface treatment	-	-	PUR
TVOC after 28 days	ISO 16000-6	µg/ m <sup>3</sup>	< 10

\* All designs are R10 according to DIN EN 16165 Annex B except Design Chevron (R9)



## Packaging

Product size (mm)	Tiles-Planks / Box	Sqm / Box	Box weight (Kg)	Box / Pallet	Sqm / Pallet	Pallet sizes (mm)	Pallet weight
102×914	36	3.36	14.0	56	188.16	95×95	813.3
152×914	24	3.34	13.9	54	180.36	100×95	781.3
457×457	16	3.34	13.9	60	200.40	95×95	865.5
610×610	8	2.98	12.6	58	172.84	65×125	759.3
457×914	7	2.92	12.4	56	163.52	95×95	724.9
184×1219	15	3.36	14.1	60	201.60	80×125	874.1
184×1219 (Chevron)	14	3.14	13.1	60	188.40	80×125	818.9



## Part numbers

Part Number	Colors	Design	152×914	102×914	184×1219	457×457	610×610	457×914
299G0258	0258 Muir Oak	Wood	•					
299G0259	0259 Natural Oak	Wood	•					
299G0262	0262 Elm	Wood	•					
299G0265	0265 Walnut	Wood	•					
299G0324	0324 Silversands	Wood	•					
299G0339	0339 American Oak	Wood	•					
299G0357	0357 Portobello	Wood	•					
299G0360	0360 Deep Forest	Wood	•					
299G0362	0362 Mystic River	Wood	•					
299G0541	0541 Flamingo	Wood	•					
299G0547	0547 Duchess	Wood	•					
299K0705	0705 Teak	Wood		•				
299K0707	0707 White Teak	Wood		•				
299H0448	0448 Malua Bay	Wood			•			
299H0577	0577 Albion	Wood			•			
299H0796	0796 Swiss Oak Golden	Wood			•			
299H0817	0817 Northwood Mokaccino	Wood			•			
299H0846	0846 Swiss Oak Pearl	Wood			•			
299H0848	0848 Swiss Oak Beige	Wood			•			
299H0855	0855 Bostonian Oak Grey	Wood			•			
299H0871	0871 Bostonian Oak Brown	Wood			•			
299M0810	0810 Chevron Moka	Herringbone			•			
299M0811	0811 Chevron Buckwheat	Herringbone			•			
299J0475	0475 Bolero	Mineral				•		
299J0512	0512 Lewis Town	Mineral				•		
299J0518	0518 Mugello	Mineral				•		
299J0528	0528 Flagstaff	Mineral				•		
299L0618	0618 Carmel	Mineral					•	
299L0751	0751 Durango Taupe	Mineral					•	
299L1058	1058 Gentleman Grey	Textile					•	
299L1077	1077 Tatami Savane	Textile					•	
299L1083	1083 Gentleman Taupe	Textile					•	
299I0094	0094 Rust Metal	Metal						•
299I0095	0095 Rust Corten	Metal						•





# Wall protection

## Decochoc+ wall protection & decorative panels

**Total protection fitting all areas by providing impact resistance, high level of hygiene and a decorative touch**

- Suitable for walls and large surfaces in ships and offshore platforms
- Unique textured surface hiding impacts and scratches, easy to clean
- Welded joints possible for perfect watertightness between panels or with vinyl flooring
- Compliant with IMO regulations

**Decochoc+ 39 colours**



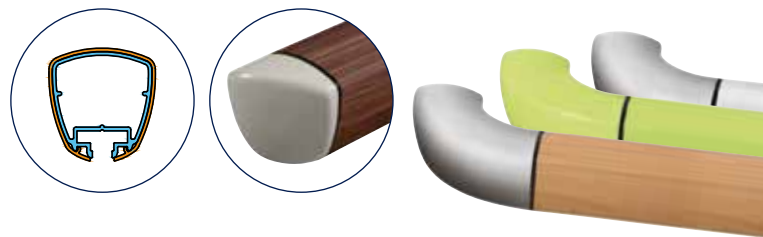
- Rigid panel with a slightly textured surface finish («Optimixt» grain)
- Standard panel dimensions: 3 m x 1.30 m / Thickness: 2 mm
- Cut to size according to requirements
- Color Chalk on stock, other colors with MOQ



## Linea' Touch handrail

**Exclusive trilobed form - validated by ergonomists**

- Combines design, ergonomics and high impact resistance
- Provides an excellent grip thanks to its exclusive trilobed shape
- Ideally suited in corridors and stairways to improve safety
- Endless combinations thanks to its large choice of accessories



**Linea'Touch with PVC sheath 28 in stock and 11 on order**



**Linea'Touch Decowood**  
5 wood effect decors



**Linea'Touch Anodised**

**Linea'Touch trilobed handrail dimensions:**

- Length: 4 m
- Cross section: height 42 mm x width 40 mm
- Overall Projection: 80 mm
- Stand-off from wall: 40 mm
- Fixing components: refined or reinforced aluminium self-locking brackets, satin silver anodised effect, screwed to the wall every 1.20 m (0.80 m centres in heavy traffic areas and on light partitions like plaster-board).



**LED version**

is available upon request.

# Accessories & tools

## IMO Adhesive Perm'Adhesive

- Solvent free acrylic Adhesive
- Conditioning : 15 Kgs bucket
- Coverage: +/- 60m2 per bucket



## Semi-rigid skirting Vynaflex

- Semi-rigid PVC skirting to be placed on walls
- Resistant to washing water
- Soft lip to hide the small defects of the support
- Available in 3 heights 60, 80 and 100mm
- For colours availability, please contact us



Vynaflex standard



Vynaflex evolution

## Soft PVC cove based skirting

- Available in 3 heights: 70, 75 and 100mm
- For colours availability, please contact us



## Vinyl Design skirting

- 100 % watertight
- Thin and discrete
- Packaging: 6 lengths of 2lm per box
- For colours, please contact us



## PVC Design Skirting Endcap

- Aluminium colour: suitable for all colours of skirting
- PVC Design Skirtings
- Can be used for one side of the skirting or the other
- Packaging : Bag of 10 reversible caps



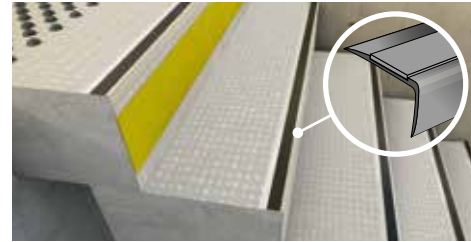


# Accessories & tools

## Aluminium stair nosing T67 alu

- Adapted for all floor covering type and thickness
- The carborundum black band provides anti-slip protection
- For a state-of-the-art stair finish
- Landing / stair harmony

Other types of PVC or aluminium stair nosings are available on demand. Contact us for more information.



## LED step lighting

- A comprehensive range of profiles that, when combined with a suitable lighting system, can create both a safe and decorative lighting solution for stairs.

For more information, please contact us.



## Entrance matting

### Romat

- Available in 3 thicknesses (12, 17 and 22mm) with 3 different inserts (Loop pile, Tufted brush or Fluted rubber)
- For frequent traffic

Different solutions adapted to different applications, please contact us for more details.



### Quickmat - rolls

- Scraping and absorbent mat for indoor use.
- Primary mat Quick Duo (2 strips) or Trio (3 strips)
- For moderate traffic
- Cut-at-size service



## Tools

### "Basic" floor welding kit

PVC case including 11 elements

- 1 Leister Triac ST welding gun • 1 push fit nozzle holder nozzle
- 1 grooving tool • 1 anti-glaze rapid nozzle • 1 nozzle brush
- 10 spare blades • 1 rapid nozzle • 1 sharpening stone
- 1 wire brush • 1 "Mozart" trimming knife
- 5 spare "Mozat" blades • 1 heating grooving nozzle



refs E8150002 (230V) / E8150006 (110V).

# Accessibility

## Warning Surfaces

### Alertile

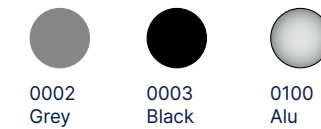
Adhesive tactile tiles to be installed on existing flooring or to be embedded in new flooring.



Formats: 838 × 426 mm - code: 059B  
1363 × 426 mm - code: 059A

### Easyplot

Self-adhesive tactile studs



Dimensions of stud: 25 mm diameter x 5 mm thickness  
Code: 059C / 059D (alu)

### Easyguide

Self-adhesive guideline



Color: 0006 Black  
Dimension of 1 bar: 295 × 16 × 3,5 mm - code: E219006

## Other finishes

In addition to the accessories, Gerflor supplies a full range of finishes and tools for floor covering installation. Please contact us for further information.





# Streamo Karavel NG



0817 Northwood Mokaccino 184x1219 mm



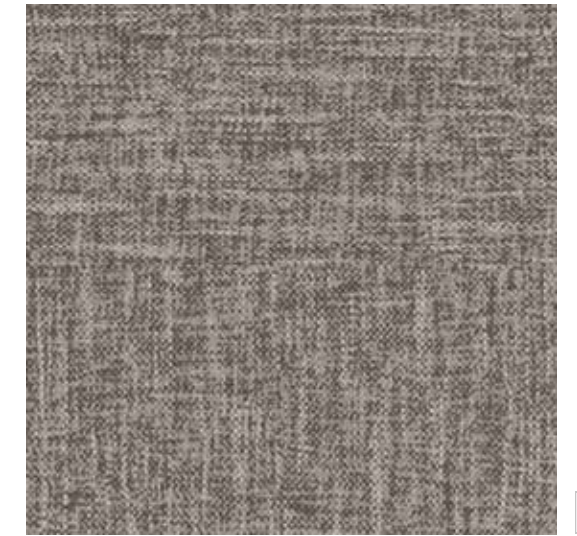
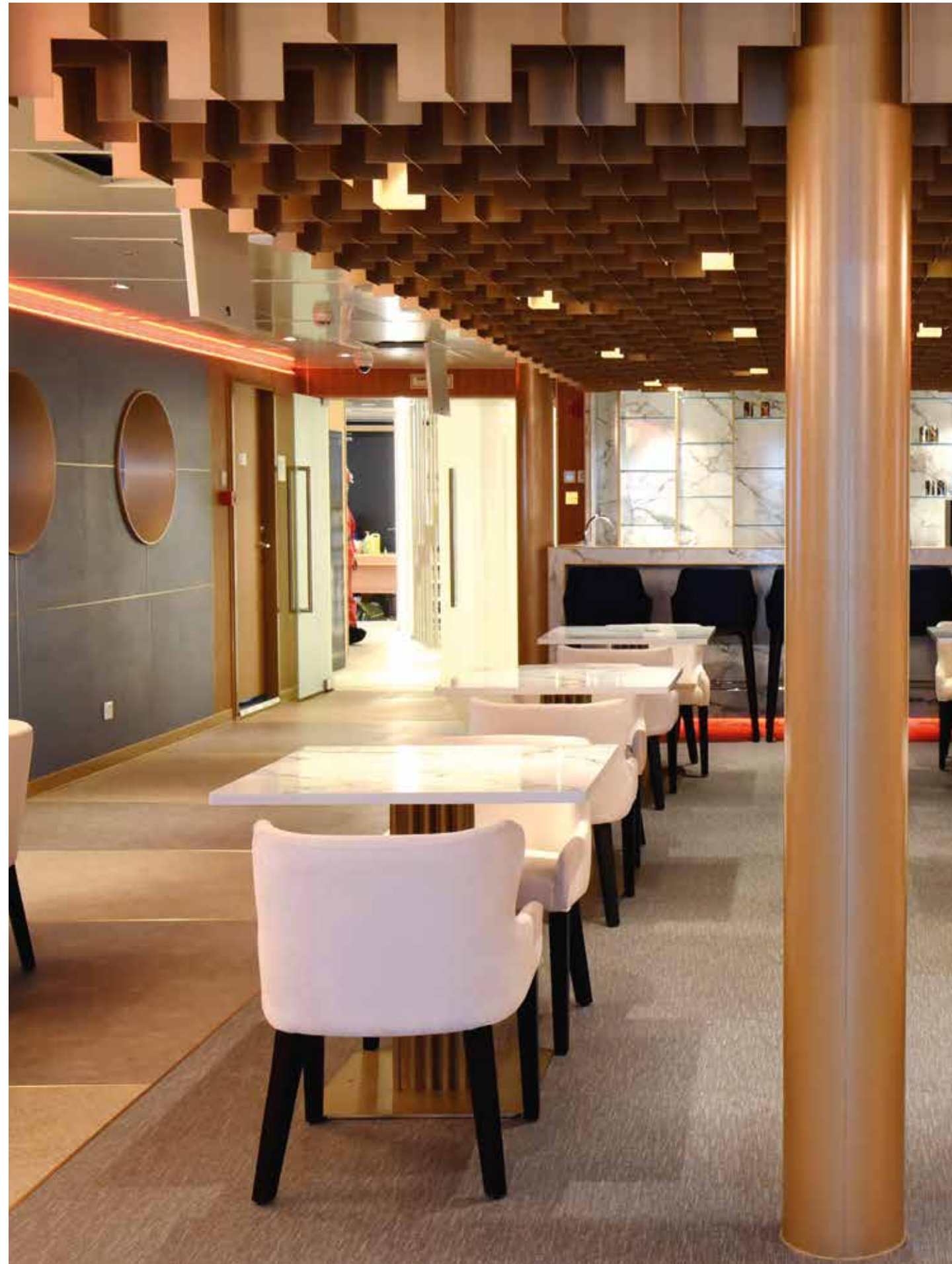
0547 Duchess 152x914 mm



0871 Bostonian Oak Brown 184x1219 mm



0855 Bostonian Oak Grey 184x1219 mm



1083 Gentleman Taupe 610x610 mm



1058 Gentleman Grey 610x610 mm



1077 Tatami Savane 610x610 mm

Design shade variation  Light  Medium  High



# Streamo Karavel NG



0811 Chevron Buckwheat  184x1219 mm



0810 Chevron Moka  184x1219 mm



0848 Swiss Oak Beige  184x1219 mm



0796 Swiss Oak Golden  184x1219 mm



0577 Albion  184x1219 mm




0707 White Teak  102x914 mm



0448 Malua Bay  184x1219 mm



0846 Swiss Oak Pearl  184x1219 mm



0357 Portobello  152x914 mm



Design shade variation  Light  Medium  High



# Streamo Karavel NG



0265 Walnut  
152x914 mm



0339 American Oak  
152x914 mm



0705 Teak  
102x914 mm



0360 Deep Forest  
152x914 mm



0362 Mystic River  
152x914 mm



0541 Flamingo  
152x914 mm



0094 Rust Metal  
457x914 mm



0095 Rust Corten  
457x914 mm



# Streamo Karavel NG



0475 Bolero 457x457 mm



0512 Lewis Town 457x457 mm



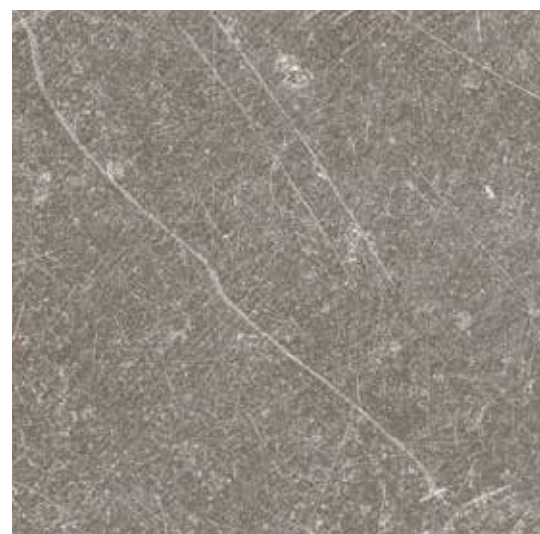
0518 Mugello 457x457 mm



0528 Flagstaff 457x457 mm



0751 Durango Taupe 610x610 mm



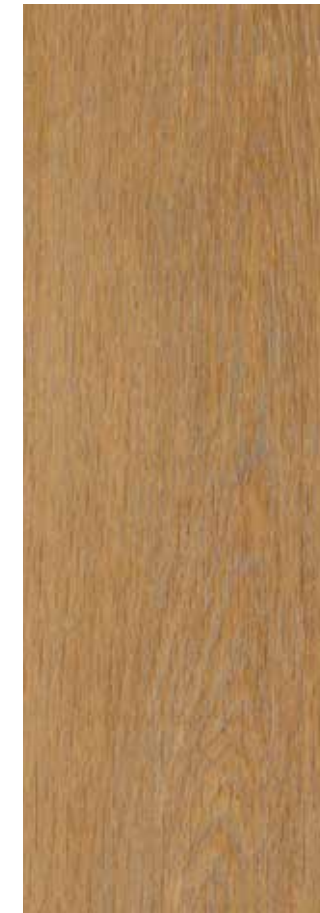
0618 Carmel 610x610 mm



© Kari Palsila



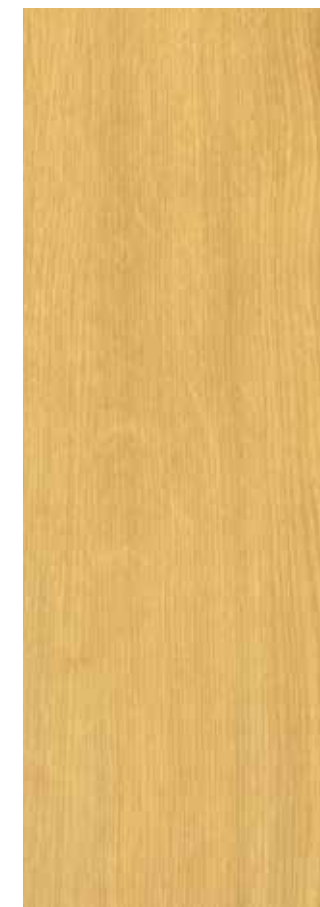
0262 Elm 152x914 mm



0258 Muir Oak 152x914 mm



0324 Silversands 152x914 mm



0259 Natural Oak 152x914 mm

Design shade variation  Light  Medium  High



# Streamo Karavel NG

gerflortransport.com / follow us 



X3240011

43, Boulevard Robert Michon  
69170 Tarare - France  
Tel.: +33 4 74 05 40 00  
Fax: +33 4 74 05 06 83  
Email: streamo@gerflor.com  
www.streamobygerflor.com



## We care / we act

Our Commitments for a Sustainable future



**CARBON FOOTPRINT\***  
-20 % kg  
CO<sub>2</sub> equivalent/m<sup>2</sup>  
between 2020 and 2025



**RECYCLED CONTENT**  
25 % by 2025



**LOW VOC PRODUCT**  
Indoor air quality



**PRE-CUT SERVICES**  
saving waste &  
installation time

Streamo Sustainable Solutions



\* Scopes 1 and 2 defined in the GHG protocol